

Inca 1^{Category}

Informazioni tecniche

Peso: gr 650 m² ± 5%

Altezza: cm 140

Composizione: 88 % PVC, 8% PES, 4% COT

Ignifugazione: ISO 3795 UNI 9175 Classe 11M

BS 5852, FMVSS 302 U.S.A. Motor Vehicle Safety, TB 117, UNI EN 1021-1/2

Resistenza all'abrasione: EN 13520 : ISO 12947 (secco) Martindale ≥ 100.000 cicli

Resistenza a trazione: UNI EN ISO 1421 Long. 300 N/5 cm; Trasv. 200 N/5 cm

Allungamento a rottura: UNI EN ISO 1421 Long minimo 40%; Trasv. minimo 145%

Resistenza alla lacerazione: UNI EN ISO 4674-1 meth. B Long. minimo 20 N; Trasv. minimo 15 N

Solidità alla luce: UNI EN ISO 4892-2 B2 Xenotest 4/5 scala dei grigi

Solidità allo sfregamento: UNI EN ISO 105-X12 scala dei grigi 4

Resistenza al distacco tra spalmatura e supporto: UNI EN ISO 2411 Long. 30 N/5 cm; Trasv. 30 N/5 cm

Esente da formaldeide ed altre sostanze nocive come da norme italiane in vigore.

Colore: sono possibili leggere differenze di colore tra una partita e l'altra.

Alcuni coloranti per abbigliamento e accessori (es. jeans) possono migrare

verso i colori chiari di questo articolo.

Questo fenomeno aumenta con l'umidità e la temperatura.

LAMM non si assume alcuna responsabilità per il trasferimento di colori causato da contaminanti esterni.

Metodo di manutenzione: usare acqua e sapone neutro.

Questa cartella annulla e sostituisce tutte le precedenti.

Technical information

Weight: 650 g/m² ± 5%

Height: 140 cm

Composition: 88% PVC, 8% PES, 4% COT

Fire-resistance: ISO 3795 UNI 9175 Classe 11M

BS 5852, FMVSS 302 U.S.A. Motor Vehicle Safety, TB 117, UNI EN 1021-1/2

Abrasion resistance: EN 13520 : ISO 12947 (dry) Martindale ≥ 100.000 cycles

Tensile strenght resistance: UNI EN ISO 1421 Long. 300 N/5 cm Across 200 N/5 cm

Ultimate elongation: UNI EN ISO 1421 Long. minimum 40% Across minimum 145%

Tear resistance: UNI EN ISO 4674-1 meth. B Long. minimum 20 N; Across minimum 15 N

Light fastness: UNI EN ISO 4892-2 B2 (Xenotest) 4/5 (grey scale)

Color fastness to rubbing: UNI EN ISO 105-X12 grey scale 4

Peel adhesion: UNI EN ISO 2411 Long. 30 N/5 cm; Accross 30 N/5 cm

Free from formaldehydes and other harmful substances as required by Italian regulations currently in force.

Colour: slight differences in colour between batches are possible.

Certain clothing and accessory dyes (ex. jeans) may migrate to lighter colors of this item.

This phenomenon is increased by humidity and temperature.

LAMM will not assume responsibility for dye transfer caused by external contaminants.

Maintenance method: use water and neutral detergent.

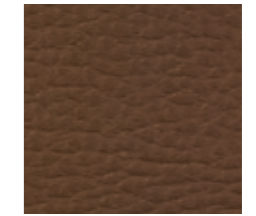
This colour chart cancels and replaces all previous ones.



Cod. 40-007



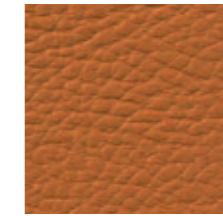
Cod. 40-034



Cod. 40-006



Cod. 40-042



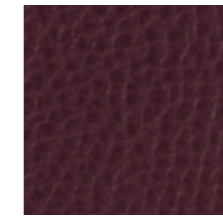
Cod. 40-050



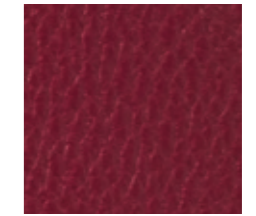
Cod. 40-014



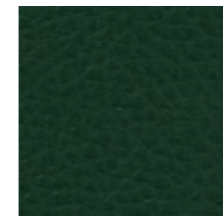
Cod. 40-018



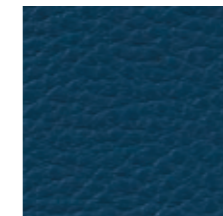
Cod. 40-072



Cod. 40-029



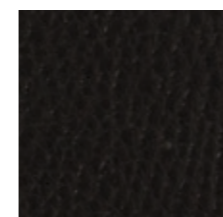
Cod. 40-081



Cod. 40-073



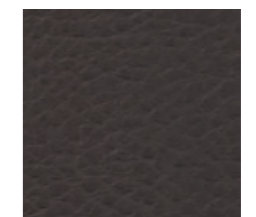
Cod. 40-003



Cod. 40-001



Cod. 40-053



Cod. 40-080

King 1^{Category}

Informazioni tecniche

Peso: gr 460 mtl ± 10%

Altezza: cm 140

Composizione: 100% Poliestere FR Trevira CS

Ignifugazione:

Italia — Classe 1

Francia — M1

Francia — NF D 60-013 AM18

Germania — B1 DIN 4102

Svizzera — Fire Protection Classification: 5.3

Austria — B1 OENORM B 3825

Austria — Q1 OENORM 3800 Part. 1

BS 5852 Crib 5 using a CM foam 35 kg/cu.m.

EN ISO 6940-6941

EN 1021 Part. 1-2 using a CM foam 35 kg/cu.m.

EN 13501-1 esp. 1,2 : B-s1, d0

USA Calif. Bull. 117 section E Part. 1

MED annex A.1 item: A. 1/3.19 and A. 1/3.21

MED annex A.1 item: A. 1/3.20

Resistenza all'abrasione: UNI EN ISO 12947 Martindale 100.000 cicli ± 20%

Solidità colori alla luce: UNI EN ISO 105 B02 (Xenotest) 5/6 ± 1/2 scala dei blu

Solidità colori allo sfregamento: UNI EN ISO 105-X12 a secco 4/5 ± 1/2, a umido 4/5 ± 1/2

Pilling: UNI EN ISO 12945-2 metodo Martindale 4/5 ± 1/2

Colore: sono possibili leggere differenze di colore tra una partita e l'altra.

Metodo di manutenzione: aspirare regolarmente con aspirapolvere

dotato di bocchette in plastica senza setole, non spazzolare,

non strofinare con stracci. Asportare tempestivamente liquidi

o altre sostanze con un panno morbido o una spugna.

Questa cartella annulla e sostituisce tutte le precedenti.

Technical information

Weight: 460 g/lin. m ± 10%

Height: 140 cm

Composition: 100% Polyester FR Trevira CS

Fire-resistance:

Italy — Class 1

France — M1

France — NF D 60-013 AM18

Germany — B1 DIN 4102

Switzerland — Fire Protection Classification: 5.3

Austria — B1 OENORM B 3825

Austria — Q1 OENORM 3800 Part. 1

BS 5852 Crib 5 using a CM foam 35 kg/cu.m.

EN ISO 6940-6941

EN 1021 Part. 1-2 using a CM foam 35 kg/cu.m.

EN 13501-1 esp. 1,2 : B-s1, d0

USA Calif. Bull. 117 section E Part. 1

MED annex A.1 item: A. 1/3.19 and A. 1/3.21

MED annex A.1 item: A. 1/3.20

Abrasion resistance: UNI EN ISO 12947 Martindale 100.000 cycles ± 20%

Light fastness: UNI EN ISO 105 B02 (Xenotest) 5/6 ± 1/2 (blue scale)

Colour resistance to rubbing: UNI EN ISO 105-X12 dry 4/5 ± 1/2, wet 4/5 ± 1/2

Pilling: UNI EN ISO 12945-2, Martindale process 4/5 ± 1/2

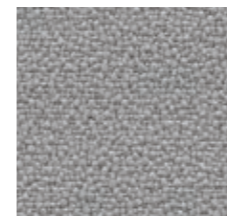
Colour: slight differences in colour between batches are possible.

Maintenance method: Vacuum regularly with a vacuum cleaner equipped

with plastic vents without bristles, do not brush and do not rub with a cloth.

Remove liquids or other substances at the proper time with a soft cloth or a sponge.

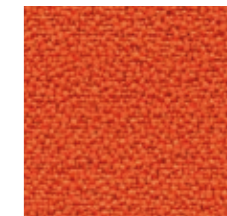
This colour chart cancels and replaces all previous ones.



Cod. 08-002



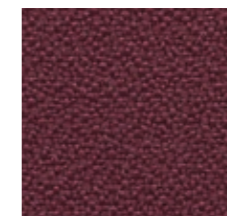
Cod. 08-035



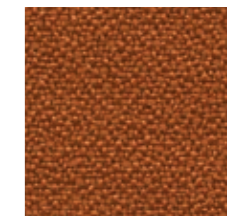
Cod. 08-010



Cod. 08-042



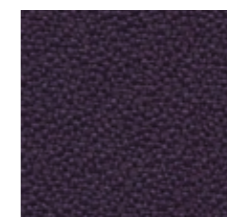
Cod. 08-037



Cod. 08-012



Cod. 08-005



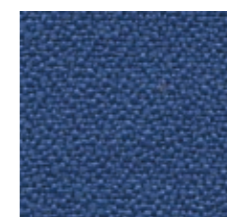
Cod. 08-084



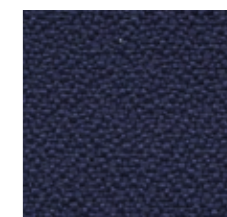
Cod. 08-014



Cod. 08-095



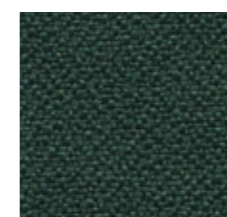
Cod. 08-003



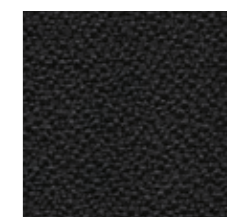
Cod. 08-047



Cod. 08-007



Cod. 08-090



Cod. 08-001

Informazioni tecniche

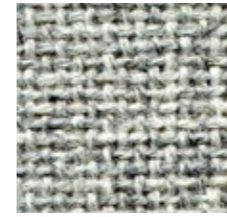
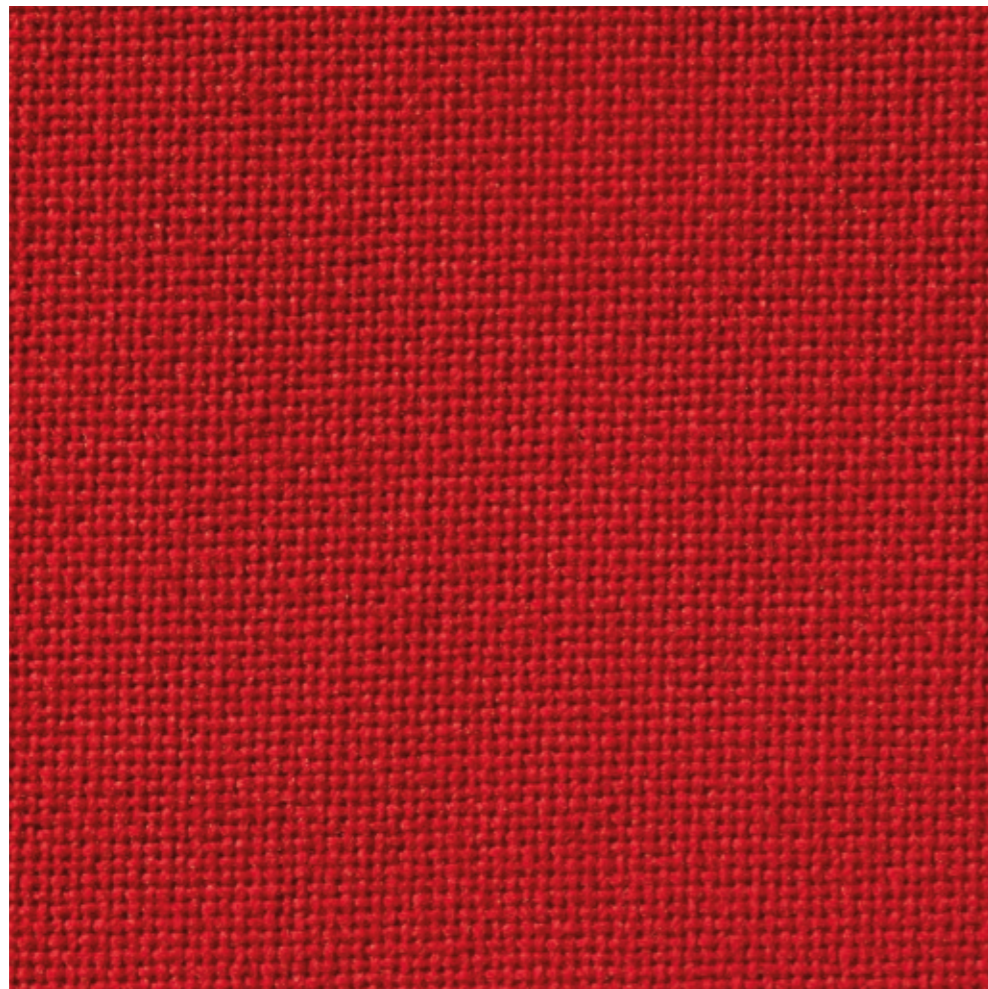
Peso: gr 630 mtl ± 5%
Altezza: cm 140
Composizione: 100% Poliestere FR Trevira CS
Ignifugazione:
 Italia — Classe 1
 Francia — M1
 Germania — B1 DIN 4102
 Svizzera — Fire Protection Classification: 5.2
 BS 5852 Crib 5 using a CM foam 35 kg/cu.m
 EN 1021 Part. 1-2 using a CM foam 35 kg/cu.m
 EN 13773 Burning Behaviour: Class 1
 EN 13501-1 esp. 1,2 : B-s1, d0
 USA Calif. Bull. 117, Section E, Part. 1
 IMO 688 (17) — IMO 563 (14) — IMO 653 (16) — IMO RES.A. 652 (16) FTP Code MSC 61 (67)
 Annex 1 part 8 — FR PU flexible foam 35 kg/mq
 FAR. 25853 Classification: yes
Resistenza all’abrasione: UNI EN ISO 12947 Martindale 100.000 cicli ± 20%
Solidità colori alla luce: UNI EN ISO 105 B02 (Xenotest) 6 ± 1
Solidità colori allo sfregamento: UNI EN ISO 105-X12 a secco 4 ± 1, a umido 4 ± 1
Pilling: UNI EN ISO 12945-2 metodo Martindale 3 ± 1
Colore: sono possibili leggere differenze di colore tra una partita e l’altra.
Metodo di manutenzione: aspirare regolarmente con aspirapolvere dotato di bocchette in plastica senza setole, non spazzolare, non strofinare con stracci. Asportare tempestivamente liquidi o altre sostanze con un panno morbido o una spugna.

Questa cartella annulla e sostituisce tutte le precedenti.

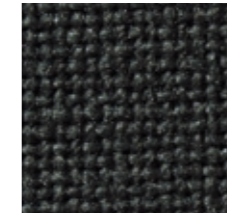
Technical information

Weight: 630 g/lin. m ± 5%
Height: 140 cm
Composition: 100% Polyester FR Trevira CS
Fire-resistance:
 Italy — Class 1
 France — M1
 Germany — B1 DIN 4102
 Switzerland — Fire Protection Classification: 5.2
 BS 5852 Crib 5 using a CM foam 35 kg/cu.m
 EN 1021 Part. 1-2 using a CM foam 35 kg/cu.m
 EN 13773 Burning Behaviour: Class 1
 EN 13501-1 esp. 1,2 : B-s1, d0
 USA Calif. Bull. 117, Section E, Part. 1
 IMO 688 (17) — IMO 563 (14) — IMO 653 (16) — IMO RES.A. 652 (16) FTP Code MSC 61 (67)
 Annex 1 part 8 — FR PU flexible foam 35 kg/mq
 FAR. 25853 Classification: yes
Abrasion resistance: UNI EN ISO 12947 Martindale 100.000 cycles ± 20%
Light fastness: UNI EN ISO 105 B02 (Xenotest) 6 ± 1
Colour resistance to rubbing: UNI EN ISO 105-X12 dry 4 ± 1, wet 4 ± 1
Pilling: UNI EN ISO 12945-2, Martindale process 3 ± 1
Colour: slight differences in colour between batches are possible.
Maintenance method: Vacuum regularly with a vacuum cleaner equipped with plastic vents without bristles, do not brush and do not rub with a cloth. Remove liquids or other substances at the proper time with a soft cloth or a sponge.

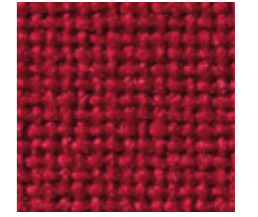
This colour chart cancels and replaces all previous ones.



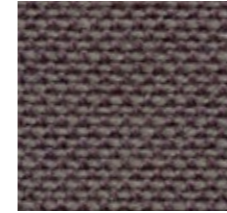
Cod. 06-1613



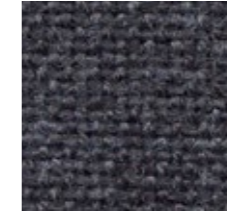
Cod. 06-035



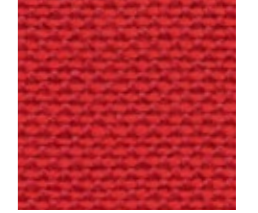
Cod. 06-022



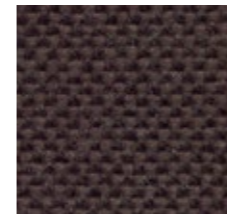
Cod. 06-094



Cod. 06-1610



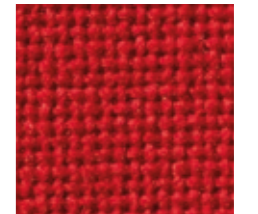
Cod. 06-017



Cod. 06-058



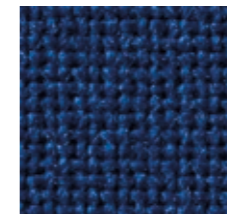
Cod. 06-001



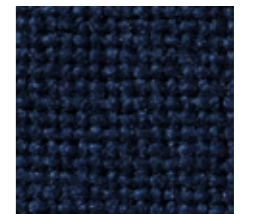
Cod. 06-014



Cod. 06-009



Cod. 06-041



Cod. 06-086

Extrema Au 2 ^{Category}

Informazioni tecniche

Peso: gr 670 mtl

Altezza: cm 140

Composizione: 63% Poliuretano 37 % Cotone

Ignifugazione: UNI 9175:1987 e 9175 Fa 1/94 Classe 1 IM

IMO Resolution A. 652(16)/89

EN1021-2/93

BS 5852-1/79

BS 5852/90 sezione 4 Crib 5

Resistenza all'abrasione: UNI EN ISO 12947-2:2000 Martindale 150.000 cicli

Resistenza alla trazione: UNI 4818 / pt. 6°, long. ≥ 250, trasv. ≥ 250

Resistenza alla lacerazione: UNI 4818 / pt.9°, long. ≥20, trasv. ≥30

Solidità colori alla luce: UNI EN ISO 105 B02:2001 (Xenotest) 5-6 (scala dei blu)

Solidità al sudore: UNI EN ISO 105 E04:98 Acido alcalino 4-5

Trattamento: ULTRA-FRESH Antibatterico Antiacaro

Tropical test: 60 giorni 70°C inalterato

Colore: sono possibili leggere differenze di colore tra una partita e l'altra.

Alcuni coloranti per abbigliamento e accessori (es. jeans) possono migrare verso i colori chiari di questo articolo.

Questo fenomeno aumenta con l'umidità e la temperatura.

LAMM non si assume alcuna responsabilità per il trasferimento di colori causato da contaminanti esterni.

Metodo di manutenzione: spolverare delicatamente e in caso di macchie lievii passare la superficie con un panno umido o con una soluzione di detergente neutro, risciacquare con acqua, non strizzare. Per le macchie localizzate e più ostinate (olio, grasso, cosmetici, inchiostro, caffè, liquori, chewing-gum, ecc.) disciogliere tempestivamente la macchia con alcool etilico (liquido incolore) diluito in acqua al 20% tamponare e trattare successivamente con una soluzione di detergente neutro, risciacquare bene.

Questa cartella annulla e sostituisce tutte le precedenti.

Technical information

Weight: 670 g/lin m.

Height: 140 cm

Composition: 63% Polyurethane 37 % Cotton

Fire-resistance: UNI 9175:1987 e 9175 Fa 1/94 Class 1 IM

IMO Resolution A. 652(16)/89

EN1021-2/93

BS 5852-1/79

BS 5852/90 section 4 Crib 5

Abrasion resistance: UNI EN ISO 12947-2:2000 Martindale 150.000 cycles

Tensile Strenght: UNI 4818 / pt. 6°, lengthwise ≥ 250, crosswise ≥ 250

Tear Strenght: UNI 4818 /pt.9°, lenghtwise ≥ 20, crosswise ≥ 30

Light fastness: UNI EN ISO 105 B02:2001 (Xenotest) 5-6 (blue scale)

Perspiration resistance: UNI EN ISO 105 E04:98, Acid Alkaline 4-5

Treatment: ULTRA-FRESH, Antimicrobial, Antiacarus

Tropical test: 60 days 70°C unchanged

Colour: slight differences in colour between batches are possible.

Certain clothing and accessory dyes (ex. jeans) may migrate to lighter colors of this item.

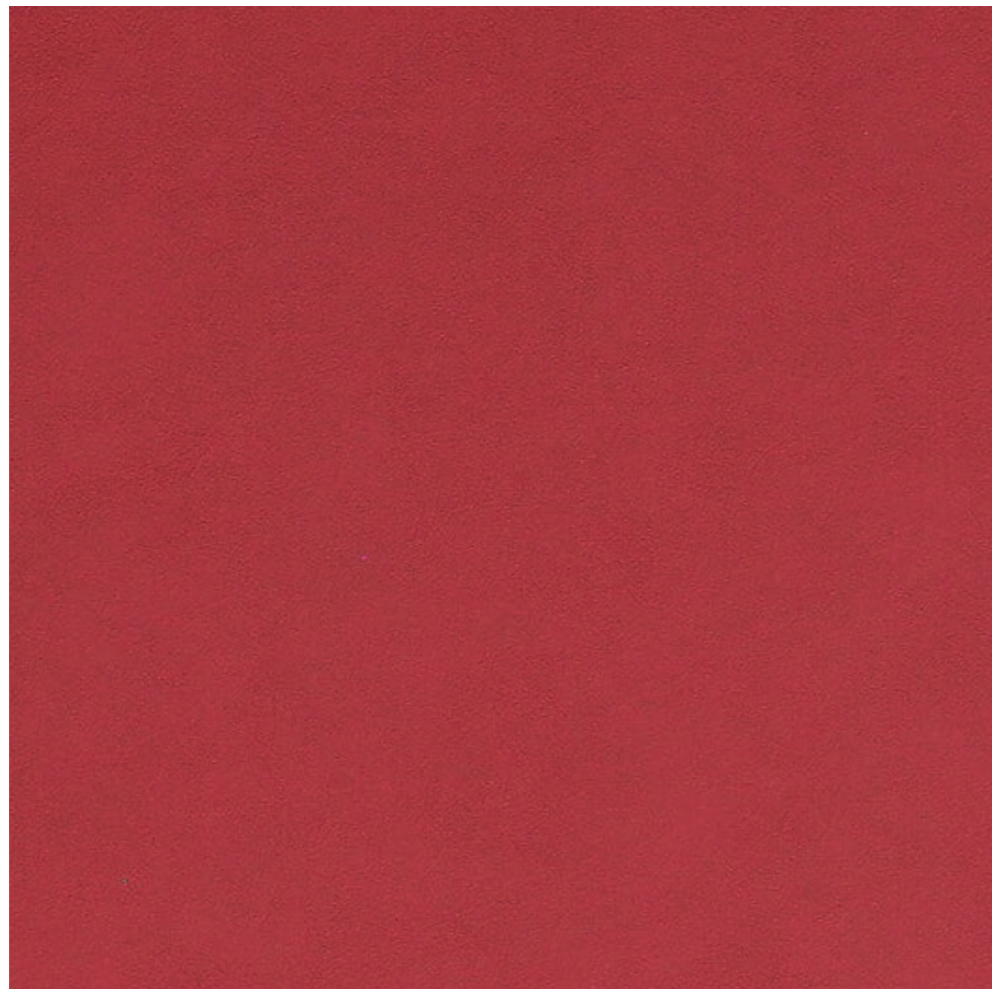
This phenomenon is increased by humidity and temperature.

LAMM will not assume responsibility for dye transfer caused by external contaminants.

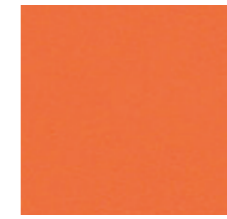
Maintenance method: Dust gently and if there are slight stains clean the surface with a damp cloth or a neutral detergent solution then rinse with water without squeezing.

For concentrated and more stubborn stains (oil, grease, make-up, ink, coffee, liqueur, chewing-gum etc.) loosen the stain at the proper time with ethylic alcohol (colourless liquid) 20% diluted in water, dab and then treat with a neutral detergent solution and rinse well.

This colour chart cancels and replaces all previous ones.



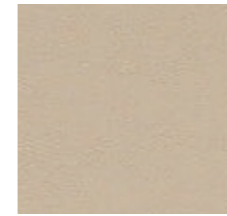
Cod. 28-034



Cod. 28-010



Cod. 28-042



Cod. 28-045



Cod. 28-014



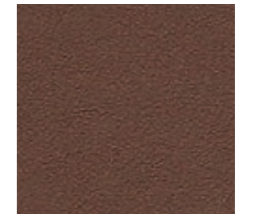
Cod. 28-024



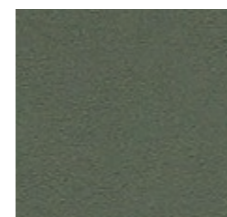
Cod. 28-025



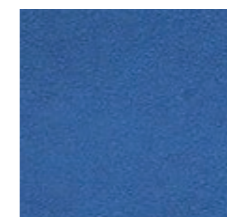
Cod. 28-037



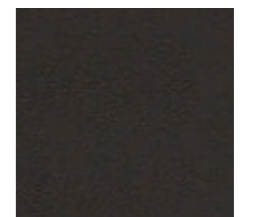
Cod. 28-013



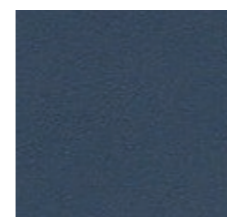
Cod. 28-089



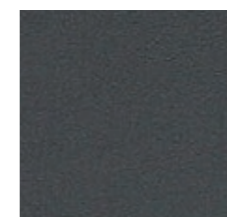
Cod. 28-040



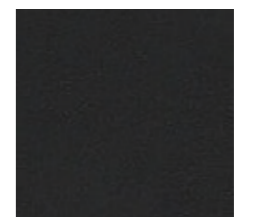
Cod. 28-039



Cod. 28-086



Cod. 28-080



Cod. 28-001

Revive 1 ² Category

kvadrat

Informazioni tecniche

Peso: gr 430 mtl

Altezza: cm 140

Composizione: 100% poliestere FR riciclato

Ignifugazione:

DIN 4102 B1

EN 1021-1/2

IMO A.652(16)

UNI 9175 1IM

US Cal. Tech. Bull. 117

ÖNORM B1/Q1

Resistenza all'abrasione: EN ISO 12947 Martindale 60.000 cicli

Solidità colori alla luce: 5-7, ISO 105-B02

Pilling: 4-5, EN ISO 12945

Colore: sono possibili leggere differenze di colore tra una partita e l'altra

Metodo di manutenzione: pulire regolarmente con aspirapolvere.

Lavaggio a secco professionale. Strofinare leggermente con panno umido.

Questa cartella annulla e sostituisce tutte le precedenti.

Technical information

Weight: 430 g/lin. m

Height: 140 cm

Composition: 100% recycled polyester FR

Fire-resistance:

DIN 4102 B1

EN 1021-1/2

IMO A.652(16)

UNI 9175 1IM

US Cal. Tech. Bull. 117

ÖNORM B1/Q1

Abrasion resistance: EN ISO 12947, 60.000 Martindale cycles

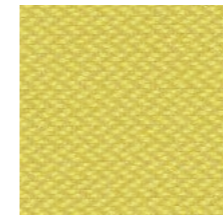
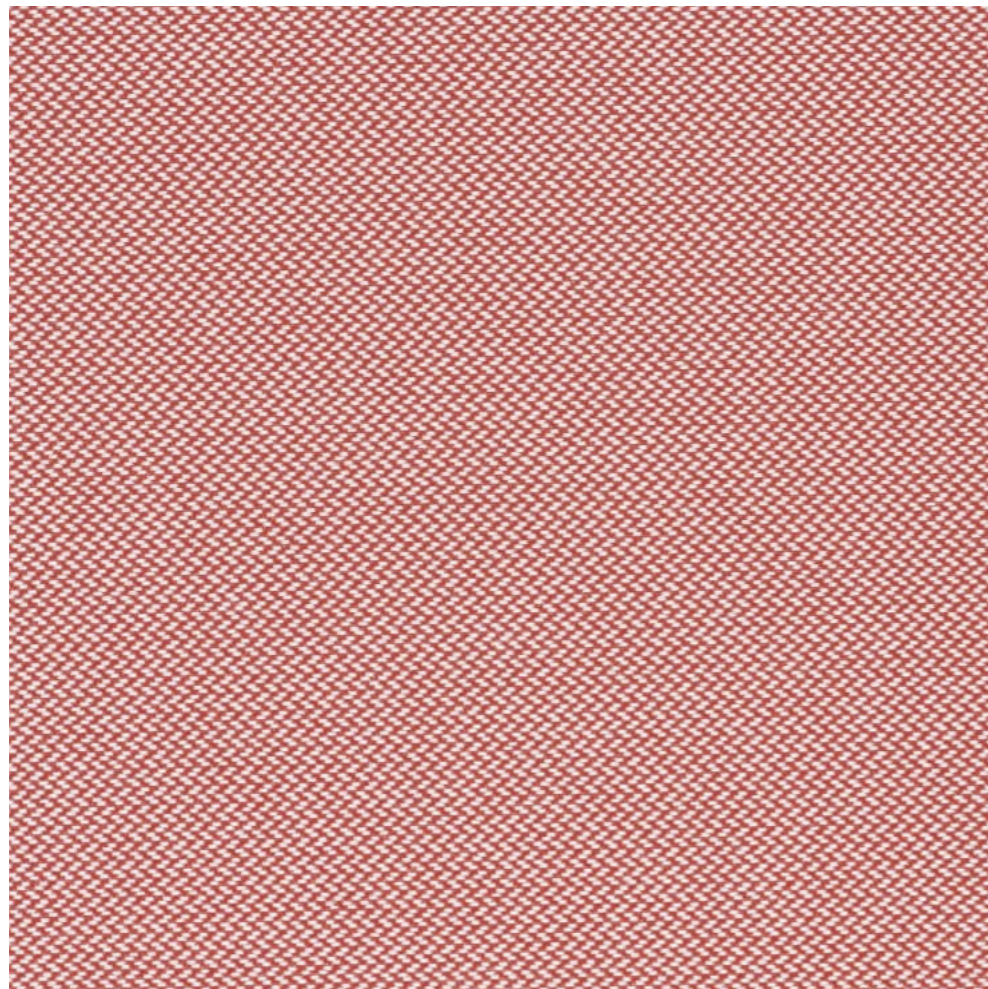
Light fastness: 5-7, ISO 105-B02

Pilling: 4-5, EN ISO 12945

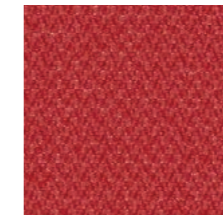
Colour: slight differences in colour between batches are possible

Maintenance method: Vacuum regularly. Professionaly dry clean or wipeclean with a dampcloth.

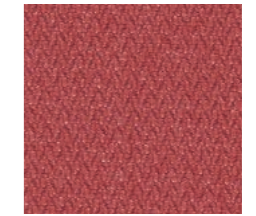
This colour chart cancels and replaces all previous ones.



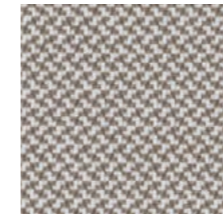
Cod. 78-424



Cod. 78-634



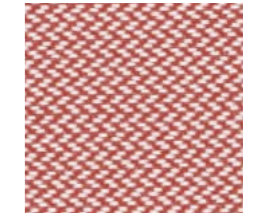
Cod. 78-664



Cod. 78-324



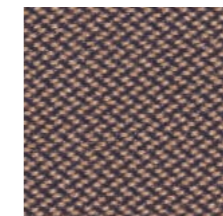
Cod. 78-224



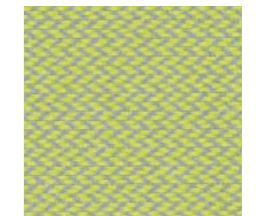
Cod. 78-524



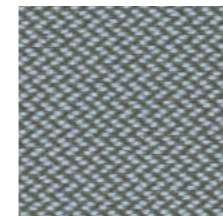
Cod. 78-144



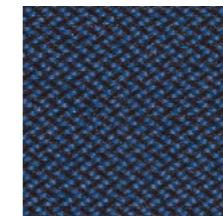
Cod. 78-454



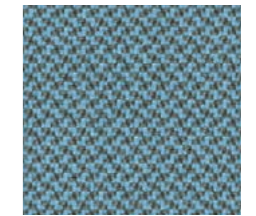
Cod. 78-914



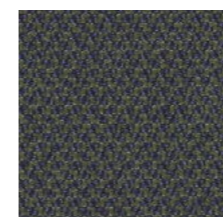
Cod. 78-944



Cod. 78-774



Cod. 78-834



Cod. 78-974



Cod. 78-194



Cod. 78-284

Luna CS 3^{Category}

Informazioni tecniche

Peso: gr 602 mtl ±5%

Altezza: cm 140

Composizione: 100 % Trevira CS

Ignifugazione:

UNI 9177:1987 - Classe 1

M1

DIN 4102-1:1998 - B1

California Tech Bulletin No 117 Sec E

Resistenza all'abrasione: UNI EN ISO 12947-2:2000 Martindale 100.000 cicli.

Solidità colori alla luce: UNI EN ISO 105 B02:2001 (Xenotest) 4-5

Solidità colori allo sfregamento: UNI EN ISO 105-X12:2003 a secco 4-5 a umido 4-5

Colore: sono possibili leggere differenze di colore tra una partita e l'altra.

Metodo di manutenzione: Molte delle macchie possono essere rimosse localmente con l'utilizzo di un semplice panno umido, prima che avvenga la completa penetrazione nella fibra e, qualora la macchia sia già asciugata, è possibile procedere alla rimozione, con ottimi risultati, utilizzando acqua e sapone.

Per la rimozione di macchie vecchie o di sporco diffuso rivolgersi ad aziende specializzate di pulizia.

Questa cartella annulla e sostituisce tutte le precedenti.

Technical information

Weight: 602 g/lin. m ± 5%

Height: 140 cm

Composition: 100 % Trevira CS

Fire-resistance:

UNI 9177:1987 - Class 1

M1

DIN 4102-1:1998 - B1

California Tech Bulletin No 117 Sec E

Abrasion resistance: UNI EN ISO 12947-2:2000 Martindale 100.000 cycles

Light fastness: UNI EN ISO 105 B02:2001 (Xenotest) 4-5

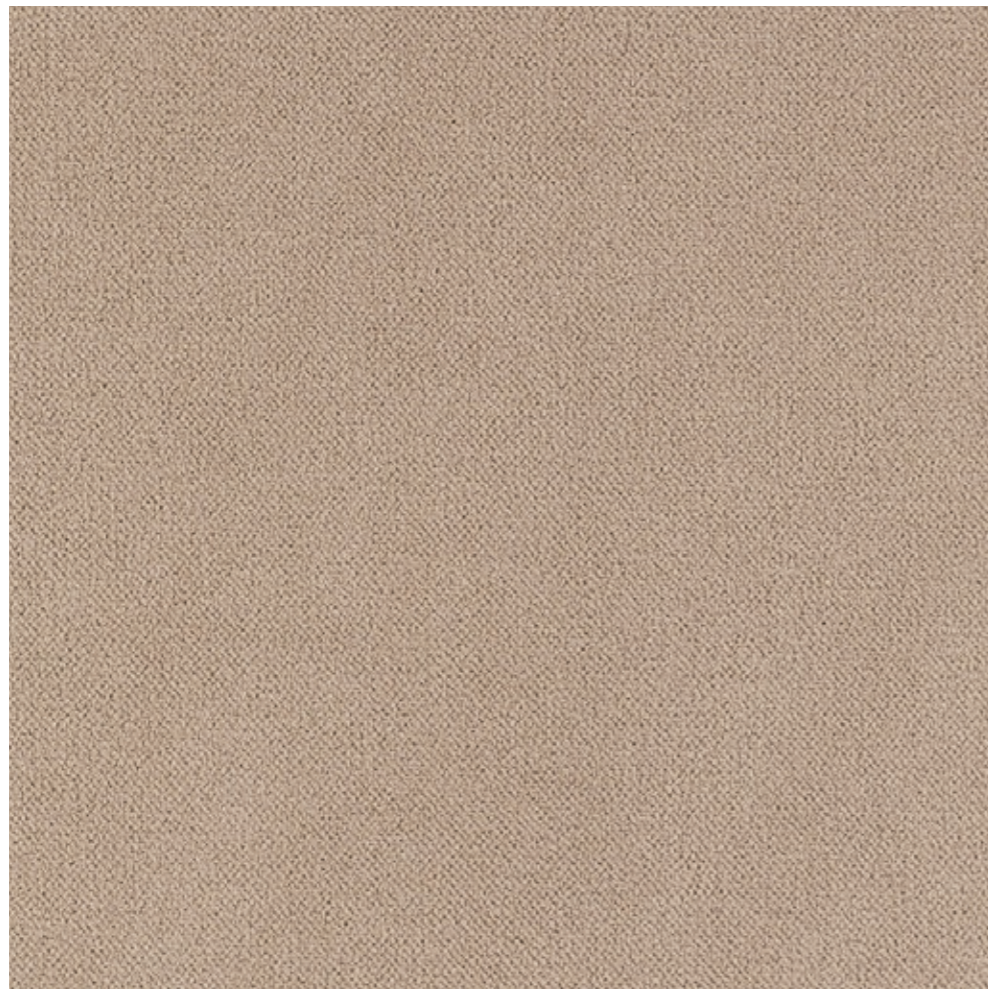
Colour resistance to rubbing: UNI EN ISO 105-X12:2003 dry 4-5 damp 4-5

Colour: slight differences in colour between batches are possible.

Maintenance method: Many stains can be removed locally using a simple damp cloth before they fully penetrate the fibre. If a stain has already dried, it can be very successfully removed using soap and water.

Consult a specialist cleaning company for the removal of old stains or wide spread dirt.

This colour chart cancels and replaces all previous ones.



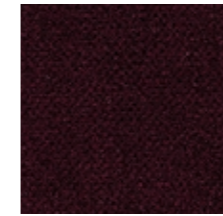
Cod. 32-036



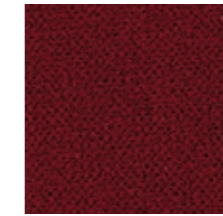
Cod. 32-070



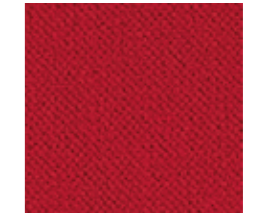
Cod. 32-013



Cod. 32-037



Cod. 32-021



Cod. 32-014



Cod. 32-084



Cod. 32-017



Cod. 32-030



Cod. 32-075



Cod. 32-038



Cod. 32-003



Cod. 32-006



Cod. 32-018



Cod. 32-031

Remix 2 ³ Category

kvadrat

Informazioni tecniche

Peso: gr 415 mtl

Altezza: cm 138

Composizione: 90% lana vergine pettinata, 10% nylon

Ignifugazione:

AS/NZS 1530.3

AS/NZS 3837, class 2

BS 5852 part 1

EN 1021-1/2

IMO A. 652(16)

NF D 60 013

NFPA 260

UNI 9175 1IM

US Cal. Bull. 117-2013

ÖNORM B1/Q1

Resistenza all'abrasione: EN ISO 12947 Martindale 100.000 cicli

Solidità colori alla luce: 5-7, ISO 105-B02

Pilling: 3-4, EN ISO 12945

Colore: sono possibili leggere differenze di colore tra una partita e l'altra

Metodo di manutenzione: pulire regolarmente con aspirapolvere.

Lavaggio a secco professionale.

Questa cartella annulla e sostituisce tutte le precedenti.

Technical information

Weight: 415 g/lin. m

Height: 138 cm

Composition: 90% new wool, 10% nylon

Fire-resistance:

AS/NZS 1530.3

AS/NZS 3837, class 2

BS 5852 part 1

EN 1021-1/2

IMO A. 652(16)

NF D 60 013

NFPA 260

UNI 9175 1IM

US Cal. Bull. 117-2013

ÖNORM B1/Q1

Abrasion resistance: EN ISO 12947, 100.000 Martindale cycles

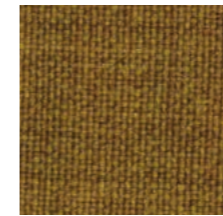
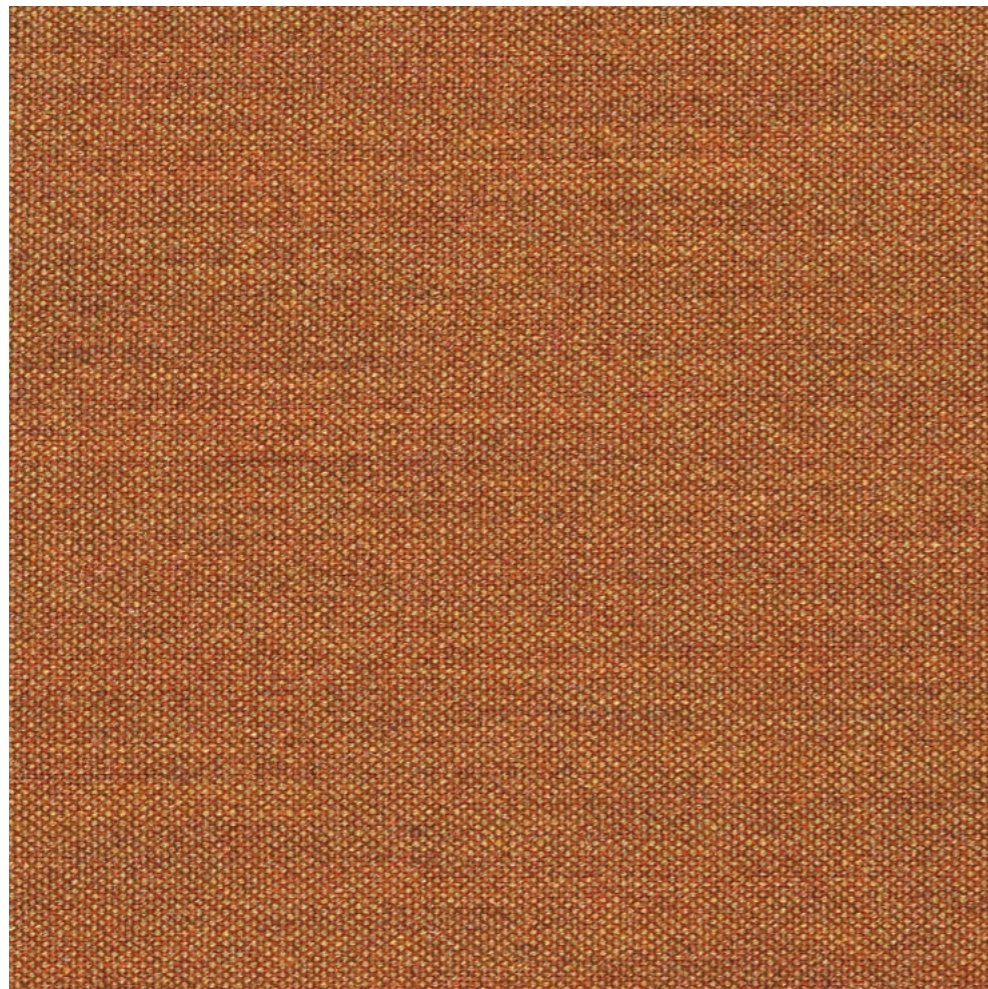
Light fastness: 5-7, ISO 105-B02

Pilling: 3-4, EN ISO 12945

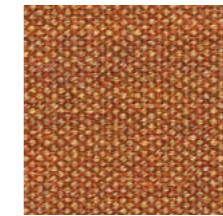
Colour: slight differences in colour between batches are possible

Maintenance method: Vacuum regularly. Professionaly dry clean.

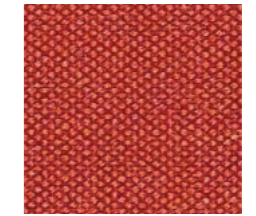
This colour chart cancels and replaces all previous ones.



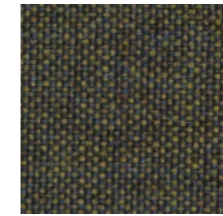
Cod. 50-022



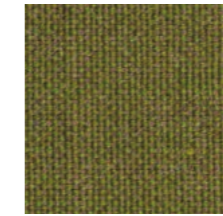
Cod. 50-043



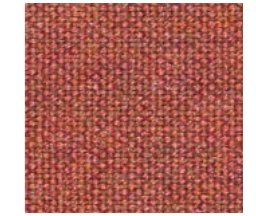
Cod. 50-014



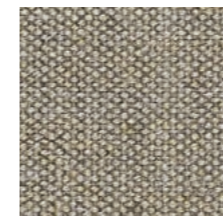
Cod. 50-084



Cod. 50-042



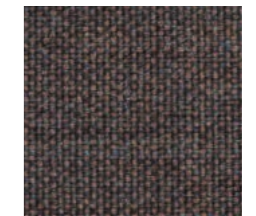
Cod. 50-065



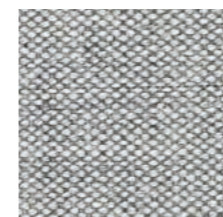
Cod. 50-046



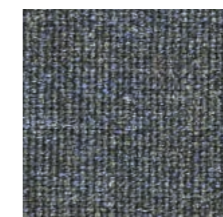
Cod. 50-036



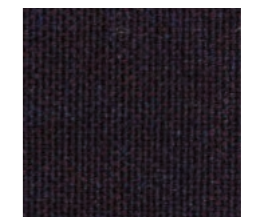
Cod. 50-006



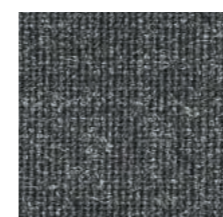
Cod. 50-025



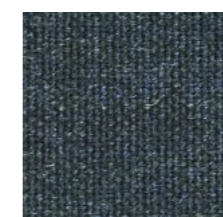
Cod. 50-075



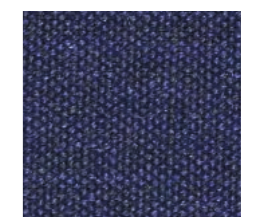
Cod. 50-002



Cod. 50-017



Cod. 50-073



Cod. 50-003

Pelle 4 ^{Category}

Informazioni tecniche

Spessore: 1 mm

Composizione: vera pelle. Concia al cromo, assenza di PCP

Ignifugazione:

UNI EN 1021/1 (sigaretta) +2 (cerino) mancata accensione

Solidità colori alla luce: IUF 402, 6 su scala 8 dei blu

Solidità colori allo sfregamento: IUF 450, 250 battute a umido, 1.000 a secco, feltrino pulito

Test di flessometria: IUP 20, 50.000 cicli no rottura rifinizione

Colore: sono possibili leggere differenze di colore tra una partita e l'altra

Metodo di manutenzione: Spolverare con un panno morbido e asciutto. In presenza di macchie usare una soluzione composta da acqua distillata o bollita e fiocchi di delicato sapone naturale (mezza tazza di fiocchi di sapone in un litro di acqua calda). Frullare la soluzione ed utilizzare solo la schiuma creatasi. Applicare la schiuma con un panno morbido, senza inzuppare la pelle, tamponando la macchia dai bordi verso il centro, senza strofinare ed asciugare subito. Non usare solventi, vapore, smacchiatori e altri agenti di pulizia. A richiesta la pelle può essere fornita in versione ignifuga in tutti i colori della presente cartella; quotazioni e termini di consegna sono da definire all'ordine.

Questa cartella annulla e sostituisce tutte le precedenti.

Technical information

Thickness: 1 mm

Composition: real leather. Chromium dressing without PCP

Fire resistance:

UNI EN 1021/1 (cigarette) +2 (match) lighting missing

Light fastness: IUF 402, 6 on blue scale 8

Colour resistance to rubbing: IUF 450, 250 strokes wet, 1.000 dry, clean felt

Flexing endurance test: IUP 20, 50.000 cycles no-break in the finishing

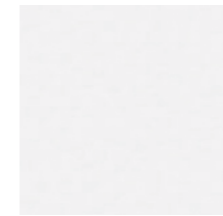
Colour: slight differences in colour between batches are possible.

Maintenance method: Dust with a soft and dry cloth. In presence of stains, use a solution of distilled or boiled water with natural mild soap flakes (half cup of soap flakes in one litre of hot water). Whisk the solution and use just the foam formed. Apply the foam with a soft cloth, without soaking the leather, blotting the stains from the edges towards the centre, without rubbing and wipe suddenly.

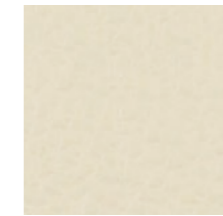
Never use solvent, steam, generic stain removers or other cleaning products.

The leather can be supplied in a fire-resistant version for all the colours on this chart on request; quotations and delivery dates are to be defined at the time of the order.

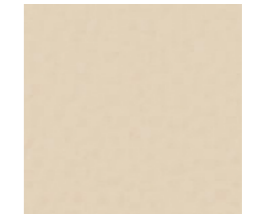
This colour chart cancels and replaces all previous ones.



Cod. 07-033



Cod. 07-006



Cod. 07-034



Cod. 07-060



Cod. 07-016



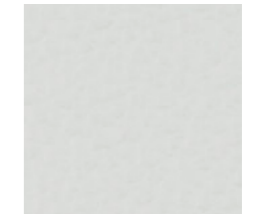
Cod. 07-042



Cod. 07-017



Cod. 07-023



Cod. 07-028



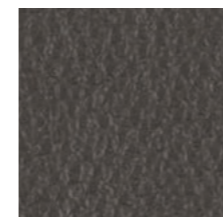
Cod. 07-089



Cod. 07-003



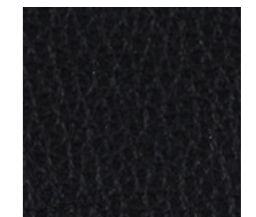
Cod. 07-037



Cod. 07-025



Cod. 07-008



Cod. 07-001

Steelcut Trio 2 ^{Category} 4

kvadrat

Informazioni tecniche

Peso: gr 770 mtl

Altezza: cm 140

Composizione: 90% lana vergine pettinata, 10% nylon

Ignifugazione:

AS/NZS 3837

BS 5852 part 1

DIN 4102 B2

EN 1021-1/2

IMO A. 652(16)

NF D 60 013

NFPA 260

UNI 9175 1IM

US Cal. Bull. 117-2013

ÖNORM B1/Q1

Resistenza all'abrasione: EN ISO 12947 Martindale 100.000 cicli

Solidità colori alla luce: 5-7, ISO 105-B02

Pilling: 3-4, EN ISO 12945

Colore: sono possibili leggere differenze di colore tra una partita e l'altra

Questa cartella annulla e sostituisce tutte le precedenti.

Technical information

Weight: 770 g/lin. m

Height: 140 cm

Composition: 90% new wool, 10% nylon

Fire-resistance:

AS/NZS 3837

BS 5852 part 1

DIN 4102 B2

EN 1021-1/2

IMO A. 652(16)

NF D 60 013

NFPA 260

UNI 9175 1IM

US Cal. Bull. 117-2013

ÖNORM B1/Q1

Abrasion resistance: EN ISO 12947, 100.000 Martindale cycles

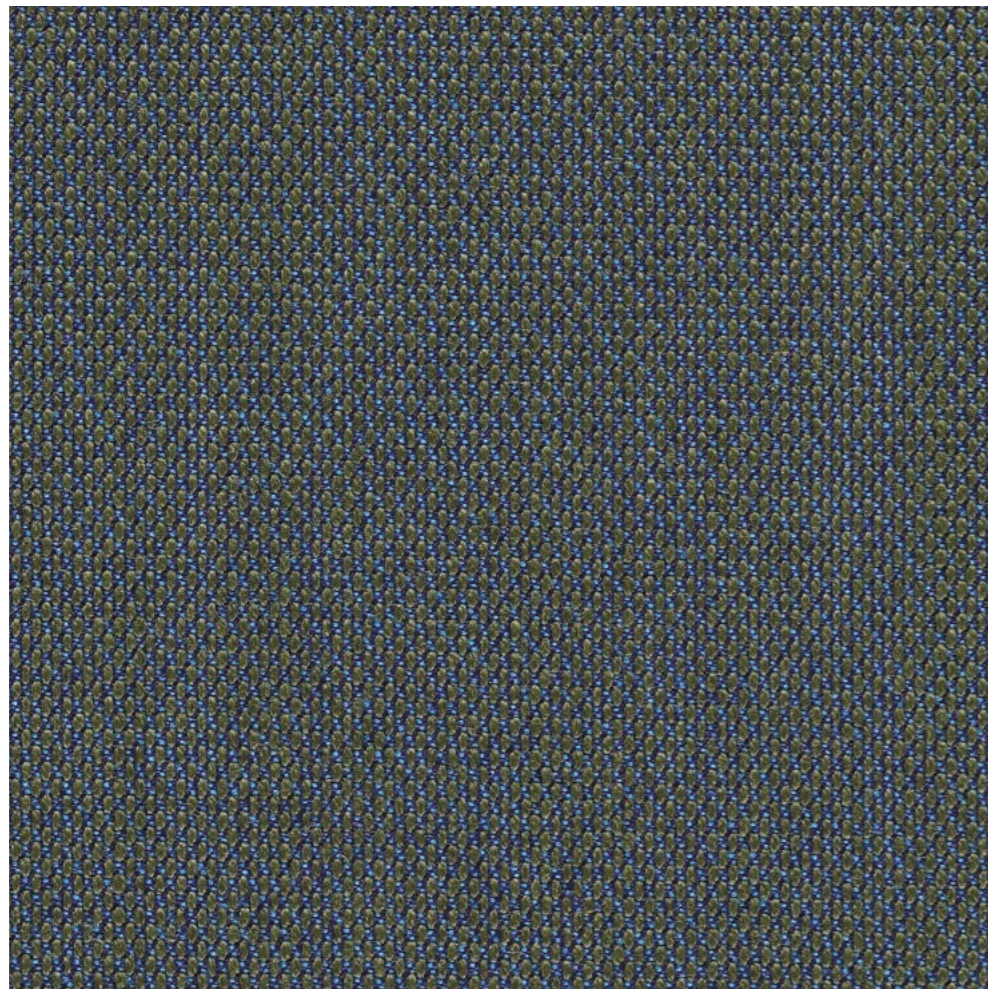
Light fastness: 5-7, ISO 105-B02

Pilling: 3-4, EN ISO 12945

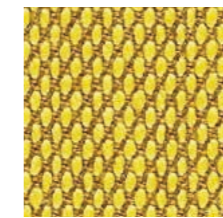
Colour: slight differences in colour between batches are possible

Maintenance method: Vacuum regularly. Professionaly dry clean.

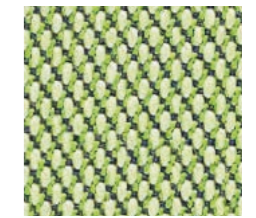
This colour chart cancels and replaces all previous ones.



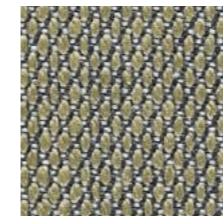
Cod. 59-213



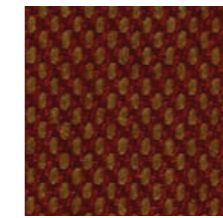
Cod. 59-453



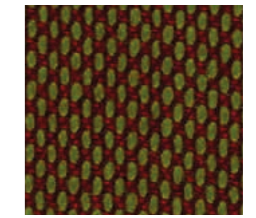
Cod. 59-933



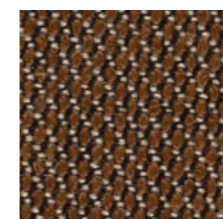
Cod. 59-253



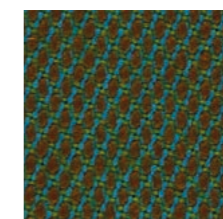
Cod. 59-565



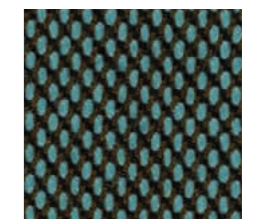
Cod. 59-945



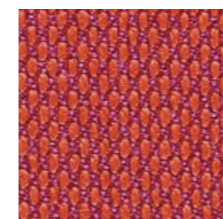
Cod. 59-325



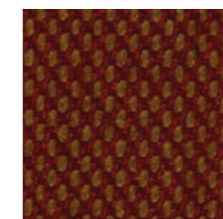
Cod. 59-553



Cod. 59-845



Cod. 59-965



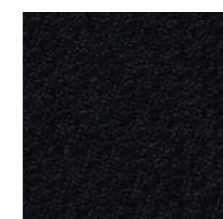
Cod. 59-665



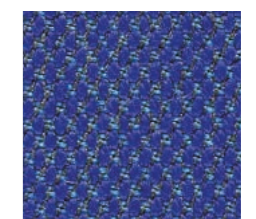
Cod. 59-883



Cod. 59-383



Cod. 59-195



Cod. 59-753