

# LAMM

is committed to having  
the impact of its products  
evaluated by



# Eco Impact

is an **independent organization** that assesses the environmental and social impact of furniture products.



This independent third party is referenced as **an expert by ADEME and BPI.**



# The Eco Impact score

helps to position a product's impact relative to other products on the market



*Exemple*



This table has **less impact** than other tables **on the market**.



This armchair has a **greater impact** than other armchairs **on the market**.

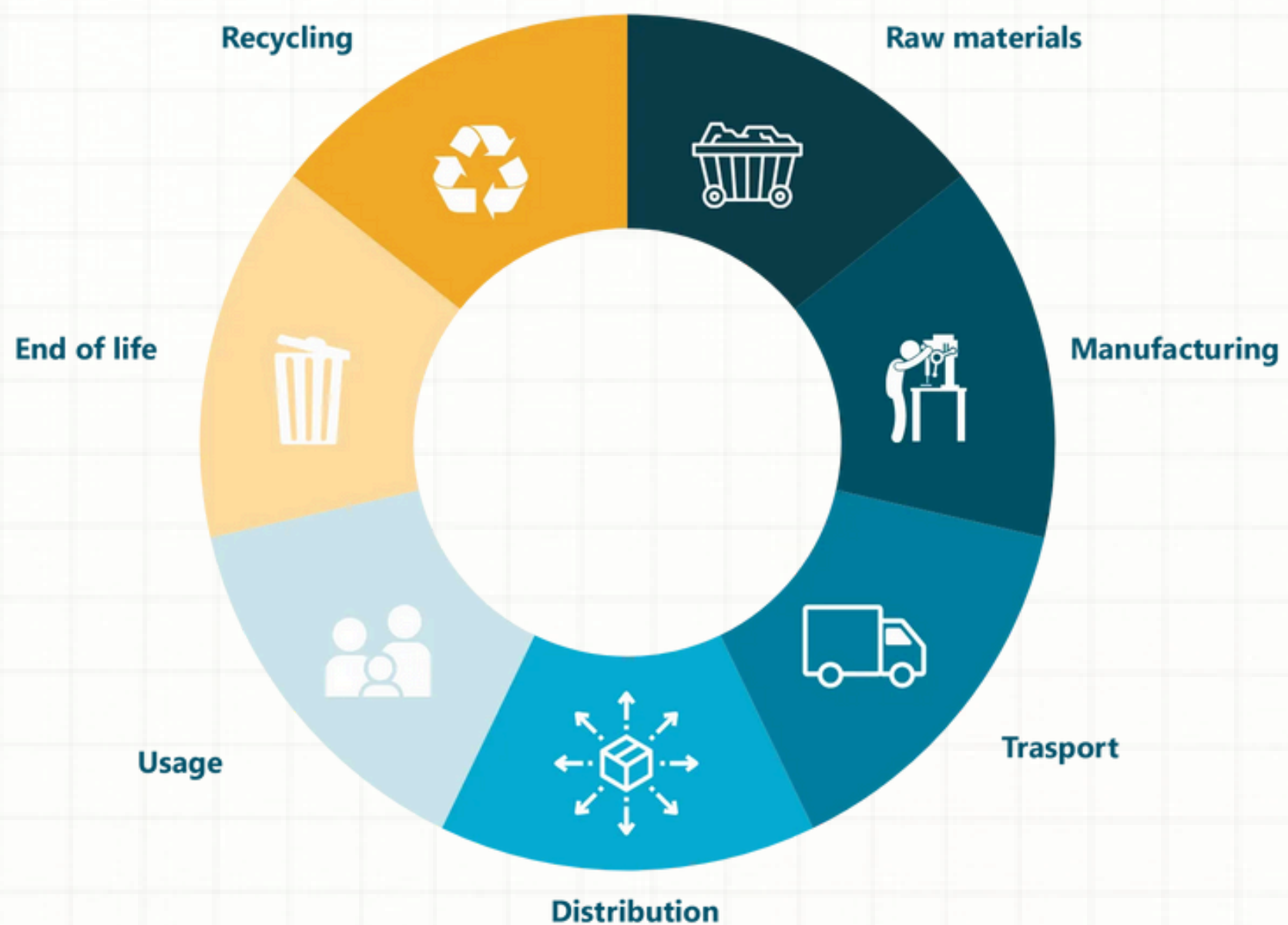
## It functions as a compass

guiding consumers to make better choices and encouraging continuous efforts in eco-design.

# Phase 01

To calculate a product's impact, Eco Impact first considers quantitative criteria for a

## LIFE CYCLE ASSESSMENT (LCA)



From raw materials to end-of-life, Eco Impact analyses the impacts generated during the entire life cycle: nothing is overlooked!

# Phase 02

To overcome the limitations of LCA, Eco Impact emphasises **quality criteria** for each phase of the life cycle:

## Qualitative criteria on social impact

20%

Subcontracting policy  
Professional integration  
Remuneration policy  
Health and safety

## Environmental qualitative criteria

10%

Certification - Traceability  
Small batches  
Waste valorization/recovery  
Flat-pack delivery - Modularity  
Repairability - Warranty etc.



# In total, Eco Impact tests more than 70 impact criteria when assessing a product

**Quantitative data**  
Life cycle analysis



**Qualitative data**  
on environmental and social impact



**Quantitative criteria**  
Life Cycle Assessment (LCA)

**Qualitative criteria**  
on social impact

Subcontracting policy  
Professional integration  
Remuneration policy  
Health and safety

**Environmental qualitative criteria**

Certification - Traceability  
Small batches  
Waste valorization/recovery  
Flat-pack delivery - Modularity  
Repairability - Warranty etc.





# **You can now find Eco Impact scores on our website and in showrooms**



Learn more about methodology

[\*\*www.eco-impact.io\*\*](http://www.eco-impact.io)

